



Mobility
Worldwide®

Empowering People



FY2021 ANNUAL REPORT (7/1/2020 – 6/30/2021)

Vision:

End immobility in the world

Mission:

Mobility Worldwide seeks to reflect the love of God by bringing mobility & dignity to those in developing countries who are unable to walk.



FROM THE DESK OF JOHN RUDD, CHAIR, INT'L BOARD OF TRUSTEES A LOOK BACK AT FISCAL YEAR 2021:

Mobility Worldwide, like the rest of the world, was forced to once again endure another year of the global pandemic during the past 12 months. Despite the challenges of this health emergency, we were able to adhere to our mission of reflecting the love of God by bringing mobility and dignity to those in developing countries who are unable to walk.

The saying, "social distancing shouldn't mean social isolation" was apropos for us once again. And yet, that's everyday life for people who can't walk and live in remote villages in low and middle income countries. That's where we come in.

In the midst of the pandemic, extra care was taken to ensure the safety of our volunteers working throughout our network of affiliates both in the US and abroad. Production was slowed while disruptions in the supply chain added yet another layer of frustration. But we made it through and now there are definite signs that the pandemic is dissipating.

Despite the challenges, Mobility Worldwide was able to continue our research and development. A new cart will be more durable and comfortable program which will lead to a new molded resin cart body. More durable and comfortable for the end user creating a definite win as we work toward our vision of ending immobility in the world.

This past year was my final year as chair of the board of trustees of this wonderful Christian organization. I want to thank Mobility Worldwide's workforce of volunteers and staff throughout the USA, Zambia, Sierra Leone and Liberia for their tireless efforts toward achieving our goal. Thank you all and God bless you.



TRANSPORTATION IS VITAL

A generous donor heard of the ongoing transportation challenges faced by staff of Mobility Sierra Leone and came to their aid. The donor generously funded the purchase of a new four-wheeled truck to help with Mobility Cart deliveries in the West African nation.

The board member approached the PET Mobility Project Foundation (MW's formal foundation) and donated the resources needed to fund the purchase of the truck and have it outfitted to carry Mobility Carts.

In many low income countries like Sierra Leone, transportation is a serious challenge. For example, once a shipment of Mobility Carts is ready to be distributed from the Mobility Sierra Leone manufacturing site, staff must spend days organizing transportation.

Years of prayers have been answered, as a faithful benefactor and volunteer addressed the challenge.



Staff of Mobility Sierra Leone now have reliable transportation to haul Mobility Carts to remote locations thanks to a generous board member.

PARTNERSHIPS WERE STRENGTHENED IN 2021

Despite the many challenges posed by the global pandemic and the resulting supply chain slowdown in 2021, Mobility Worldwide was able to attract new distribution partners while also strengthening relationships with existing partners like Aztec Ministries located in Mecatlan, Hidalgo, Mexico.

Tami Beller-Gaddis, Aztec Ministry's Project Director, wrote, "I just want to let you know that the Mobility Carts arrived safely at our warehouse. The Aztec team immediately loaded a 15-passenger van full of Mobility Carts in order to make it to our brigade site to distribute to those in need", she stated.



The warehouse team at Aztec Ministries in Hidalgo worked quickly and efficiently to unload arriving Mobility Carts and readying them for distribution the very next day.



A young Mexican man with limited use of his arms is fitted to a Pull Cart which is ideal for people with these types of physical challenges.

GIRL POWER TO THE RESCUE

God bless social workers for they are some of the hardest working and underpaid people in the world and typically they are women. So the story goes in the country of Gabon where the E4 Project: Gabon accepted 100 Mobility Carts to help those in need in the West African country

The challenge? How to assemble 100 Mobility Carts in time for a fast approaching distribution program. Gabonese social workers to the rescue! The E4 Project worked with other humanitarian aid partners to locate, recruit and train five female social workers to assemble each of the Mobility Carts. Additional training was needed to ensure those receiving the carts were properly fitted into the device.

As expected, the volunteers performed admirably and everyone was more than satisfied with the increase in their quality of life. It takes many links in the chain to get Mobility Carts to where they are needed and the Gabonese social workers proved the strength of the link they represent.



Social workers from Gabon were meticulous in assembling 100 Mobility Carts for those anxiously awaiting their delivery.

This lady from Gabon was happy to trade in her crutches for a new Mobility Cart.

BEHIND THE BIG NUMBERS, THERE ARE INDIVIDUAL STORIES

The numbers are staggering; 70-million people in need of a wheelchair worldwide. In Malawi alone, the government reports that nearly half a million children and adults need an assistive device in order to travel independently. These numbers may seem insurmountable so it's important that we realize there are individuals behind the large numbers.

As proof, here's a picture of 5-year-old Devine Martin of Zakana Village, Malawi, who was diagnosed with cerebral malaria when she was learning to walk a few years ago. The disease left her unable to walk and limited her speech. Her mother was determined to enroll Devine in nursery school and had to make sacrifices. She had to carry her growing daughter on her back before she could then go to work.

"It has been a challenge for me, as a mother, to carry Devine to school every day", Egle Martin said. "When I do that, I do not have enough time to go to the market to carry out our family business", she explained.

However, that all changed, thanks to the help of Mobility Worldwide, Action for Progress and the Malawi Project.

Devine now has her own Mobility Cart which makes traveling to school much quicker and easier ensuring a better life for her and her mother.



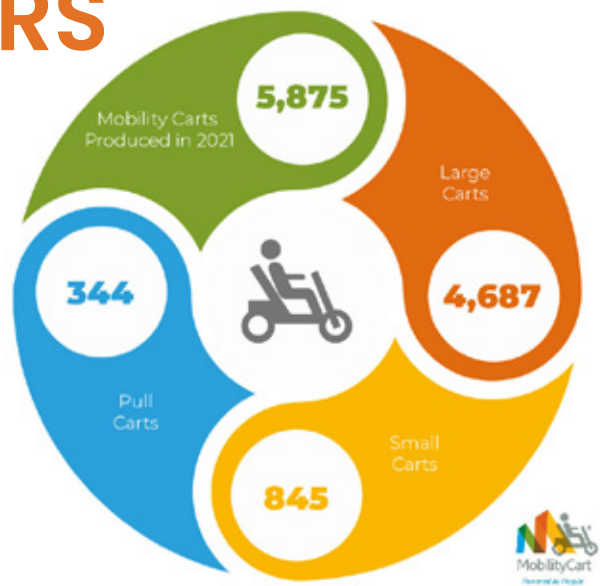
5-year_old Devine Martin

BOARD OF TRUSTEES

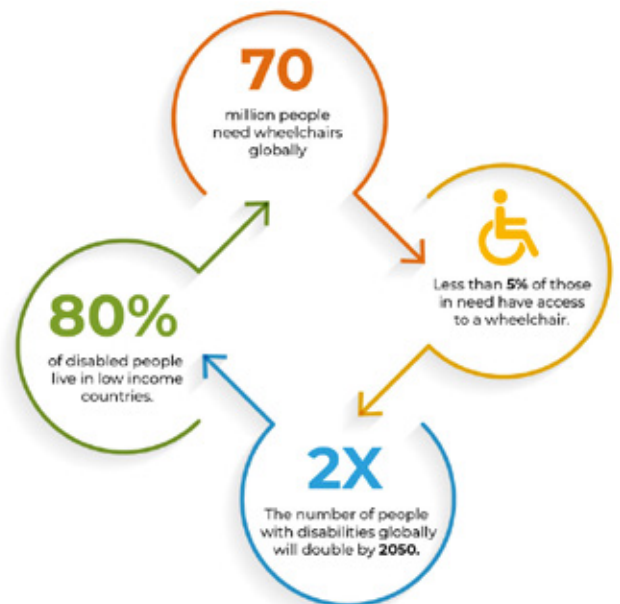
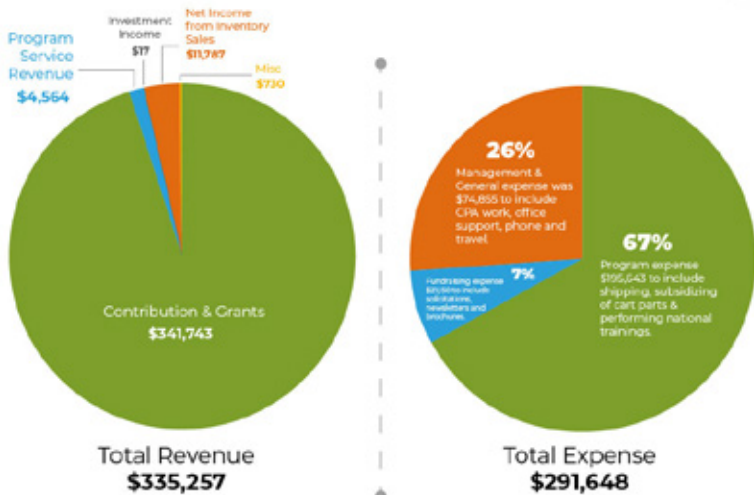
- John Rudd, Chair, President of NuSoft Technologies
- Margot Newcomb, Vice Chair, former classroom teacher
- Dale Dykema, MD, retired physician
- Terry Furstenau, retired printer and farmer
- Roger Hofmeister, MD, retired physician
- Rodger Keene, Treasurer, retired auditor for the US Army
- Lori Leeper, Secretary, retired Missouri state retirement fund
- Jonathan Nelson Chinese Interpreter and manufacturing, Bicycle Corp. of America
- Christine Roberto, retired software sales
- Dick Witherite, retired property & casualty insurance executive
- Scott Walters, Ex Officio, Executive Director, Mobility Worldwide

BOARD OF ADVISORS

- Steve Baima Farmer and rancher, retired USDA
- Robert Fleming, Legal Consultant, Senior Assistant MO State Public Defender
- Walt Hays, retired minister and non-profit development officer
- Charles Sauer, Director of Information Technology, software architecture consultant
- Ray Truhn, retired engineer
- Rev. Mel West, Co-Founder of Mobility Worldwide and retired pastor



Finances:
The global pandemic "put a hurt" on Mobility Worldwide as each shop throughout our network was forced to severely alter their manufactures processes and schedules to maintain social distancing protocols. Fundraising also took a hit as donors were more cautious with their giving as society prayed for an end to COVID-19 and the Delta variant. With that said, Mobility Worldwide's 500+ volunteers proved their resiliency as they continued to handcraft Mobility Carts and send them abroad.



Mobility Worldwide's financial statements are reviewed by the independent accounting firm Gerding, Korte and Chilwood, PC, CPAs, Columbia, MO. The above financial office recognizes revenue and expenses managed by the international office and does not take into account the estimated \$2,056,250 raised through the 20+ affiliate locations throughout the US, Zambia, Sierra Leone and Liberia.



STAFF

Scott Walters, Executive Director

Cary Loesing, Director of Operations

Lori Leeper, Executive Assistant

CONTACT US

Mobility Worldwide
503 E. Nifong Blvd. STE H #186
Columbia, MO 65201
(770) 407-8796
mw@MobilityWorldwide.org
Mobility Worldwide, an initiative of PET Int'l,
is a tax-exempt 501(C)(3) charity.
EIN #86-1128278