



July 1, 2016

Hello My Friend!

You are going to enjoy this year's Annual Conference to be hosted by your friends and colleagues at PET IN – DeMotte, September 22 – 24, 2016. Enclosed information includes specifics on lodging, transportation, scheduling, meals, pricing, side trips and award presentations. We are confident you won't be disappointed so please come!

New initiatives to be discussed include the organization's rebranding program and an energized research and development (R&D) effort. Of course, videos and reports of various mission distribution trips will also be part of the conference along with a chance to share your successes from the past year. And there are two opportunities to visit the host shop to gain a greater understanding on how their operation works.

Spread the word and share the enclosed information with everyone. Register as soon as possible—the DEADLINE for registration is September 8th, 2016. You will be responsible for paying for and making your own transportation and lodging arrangements. The cost of meals will be \$55 per person with PET International paying for the various conference costs.

Mail your checks to PET International, 503 E. Nifong Blvd., #186, Columbia, MO 65201-3517. On the memo line of your check, write: Annual Conference and list the names of those attending. You may also register online by visiting our website www.petinternational.org. Click on the donate button and then when making your payment, write Annual Conference and again list attendee names in the notes section. Need help? Email pet@petinternational.org or call Kathy Maynard at (573) 823-5550.

Thank you once again for all you have done to help reflect the love of God by bringing mobility and dignity to those in developing countries who are unable to walk.

God bless you and we look forward to seeing you in September!

Sincerely,

A handwritten signature in cursive script that reads "Scott".

Scott Walters
Executive Director

P.S. To help update our records, please also fill-out the Affiliate Contact Form in the packet and send to us as soon as possible.

Your Schedule

Thursday, September 22, 2016

Time	Session Title	Presenter
10:00AM – 5:00PM	Customized hands-on demonstrations of the various production methods used at the PET IN – Demotte shop. Interested attendees will be asked what area interests them most. Input will be sought so that specific timeslots can be tailored for volunteers. Depending on timing, refreshments/lunch will be served.	Host Volunteers at the PET Demotte shop
7:00 – 8:30PM	Ice Cream Social	Comfort Inn Hotel

Friday, September 23, 2016

Time	Session Title	Presenter
8:00 – 8:45AM	Check-In & Registration	Host Volunteers
8:45 – 9:00AM	Welcome and Host Award	Scott Walters, Executive Director
9:00 – 9:45AM	Devotion	Pastor Meg Hegemann, former Pastor Wilkes Blvd. United Methodist Church, Columbia, MO
9:45 – 10:30AM	Rebranding & Marketing	Jim Conn, Board Chair and Scott Walters, Executive Director
10:30 – 10:45AM	Coffee Break & Legacy Award	Arla Gabrielse, Host Volunteer
10:45 – 11:45AM	Research & Development (R&D)	Brad Fain, PhD, GA Tech Research Institute & PET Int'l Bd. Member
11:45 – 1:00PM	Lunch & Teamwork Award	Host Volunteers
1:00 – 1:45PM	India Distribution w/Ishwar Naik	Dale Dykema, Bd. Mbr. & PET West MI
1:45 – 2:30PM	Fundraising Best Practices	Scott Walters, Executive Director
2:30 – 3:00PM	Break & Entertainment	Arla Gabrielse & Volunteers
3:00 – 3:45PM	Ivory Coast Distribution	Gary Moreau, PET Columbia
3:45 – 4:30PM	Q&A: An Open Discussion with Senior Leadership	Jim Conn, Board Chair & Scott Walters, Executive Director
4:30 – 5:00PM	Closing Announcements & Wrap-up including The Best Door Prize Ever!	Host Volunteers
5:00 – 6:00PM	Dinner	
6:30 – 8:00PM	Open House at PET IN DeMotte <ul style="list-style-type: none"> • Suggested Practices include “packing, welding, woodworking, etc.” • Friends of Mobility Award • Tour at Your Own Pace 	Host Volunteers

Saturday, September 24, 2016

Time	Session Title	Presenter
7:00 – 8:45	Board of Directors Session	Board and Staff
8:45 – 9:00AM	Welcome Back and Coffee	Host Volunteers
9:00 – 9:15AM	Devotion	Bob Gabrielse, Host Volunteer
9:15 – 10:00AM	PET Production: Best Practices	Bob Gabrielse, D&S Chair
10:00 – 10:30AM	Coffee Break and Quick Thinker Award	Host Volunteer
10:30 – 11:45AM	Guatemala Distribution with Hope Haven: Impressions and Moving Forward	Scott Walters, Executive Director
11:45 – 1:00PM	Lunch & Entertainer of the Year Award & “Friends We Lost Over the Past Year”	Host Volunteers
1:00 – 1:45PM	Distribution, Partners, Logistics and Shipping	Von Driggs, Director of Operations
1:45 – 2:45PM	The Future of Our Partnerships: Where are we heading in the future?	PET Int’l Leadership
2:45 – 3:00PM	Break	Host Volunteers
3:00 – 4:30PM	Affiliate Sharing—An Open Forum <ul style="list-style-type: none"> • Special God stories • Best Practices • Successes • Major Achievements 	Affiliate Team Members
6:00 – 8:00PM	Celebration Dinner: <ul style="list-style-type: none"> • Praise Team & Worship Director w/song • Special Guest Speaker: Echo VanderWal of the Luke Commission, Swaziland • Blessings for Safe Travels! 	Hosts

Sunday, September 25, 2016

There are many churches in the DeMotte, IN area where you can worship on Sunday morning!
 Our Host church for the Conference is **Community Church**, and we encourage you to worship with us there.

We worship at 2 times: 8:15 am service and 10:00 am service

Your Accommodations

Comfort Inn

3550 E 181st Ave.
Hebron, IN 46341
219-690-1619

Located 1/2 mile east of Interstate 65 on Exit 240 (a typical Interchange type of area).

The rooms are being held for the conference attendees Sept. 21 (Weds. evening) through Sept. 24 (Sat. evening).

A minimum of 15 Rooms are being held for conference attendees (as a room is rented, the hotel automatically holds another room to keep an inventory of 15 rooms reserved at all times—but only up to until August 21, 2016). After that the room rate will still be honored so long as rooms are available, but could be rented to others after August 21, 2016.

Rooms have all been refurbished with new furniture and carpet in the last year. We have looked at the rooms; there are 74 rooms, larger rooms than most hotels, and have **one king bed** or have **two queen beds**—you can specify what you prefer. Most have fridges, and some have microwaves; some are handicapped accessible. All seem to be quite clean, fresh, and comfortable. Reviews on Trip Advisor especially point to the cleanliness of the facility [gets 4 out of 5 stars].

Conference Rate is \$75.99 (plus tax) per night. (**Normal Room Rate** is \$92.99 (plus tax) per night).

The rooms can be rented for 1 to 4 nights, depending when you arrive and leave. You can book a room for Wed. night if you plan to be a part of the Thursday Conf. activities, and stay there through Sat. night if you plan to leave on Sunday. You will make your own reservations—mention “PET Conference” and you will get the group rate.

The map shows the Comfort Inn to be 13 miles from the Conference location; traffic should not be heavy so 20+ minutes is adequate to get to the Conference location.

Breakfast: A full hot breakfast is served from 6:00 am to 9:00 am; it includes real eggs, sausage, waffles, Greek yogurt with toppings, juices, cereal, green tea, fruit, toast and bagels.

Casual Meeting Room: Unless rented out for a party or other activity we are welcome to gather in the meeting room (holds about 75 people) for talk, games, etc. in the evening.

Campgrounds

Oak Lake Family Campground

5310 E. 900 N.
Fair Oaks, IN 47943
219-306-8223

<http://oaklakefamilycampground.com>

There are several other campgrounds in the area. But, we suggest that you do not make reservations at the **Sun Aura Campground** or **Ponderosa Sun Club**, both are located near the Conference location—but both are nudist campgrounds.

Private Homes

There may be a few private homes that are available for those who have a vehicle (to get back and forth to the Conference activities). If you want to be in line for one of these, then email Arla Gabrielse at gabes6@embarqmail.com to be put on a waiting list—there is no guaranty that homes will be available to fulfill your request; priority will be given to conference leaders and speakers.

Your Meals

Breakfast will be on your own—hotel guests will have full breakfasts included at the hotel as part of their hotel reservation cost; if an attendee stays at a private home, the host family will be asked to prepare the breakfasts for the guest.

Noon Lunch will be provided to all registered attendees; this will include the Thursday lunch at the DeMotte PET Shop, and the Friday and Saturday lunches at the Conference location. The cost is included in the Registration fee.

Evening Meals will be handled as follows:

Wednesday evening you will be on your own—the Dennys Restaurant near your hotel is a good clean Dennys; and McDonalds, Wendys, and Arbys are also near to your hotel. West of your hotel about 6 miles are several restaurants in Lowell, IN.

Thursday Evening you will be on your own—the Dennys Restaurant near your hotel is a good clean Dennys; and McDonalds, Wendys, and Arbys are also near to your hotel. West of your hotel about 6 miles are several restaurants in Lowell, IN. The Ice Cream Social at hotel in the evening—is included in your Registration fee.

Friday Evening the meal will be provided to you at the Conference location. The cost is included in the Registration fee.

Saturday Evening the banquet meal will be provided to you at the Conference location. The cost is included in the Registration fee.

Your Costs

You will cover your own transportation costs to get to the Conference, including shuttle bus fees, except that we will try to have volunteers pick you up at the bus station in Highland and get you to the hotel when you come into town—provided you make arrangements for this at least 1 week ahead of time —**see the sheet entitled *Your Airport Connections*** for details on making advance arrangements to be picked up.

The Registration Fee will be \$55.00 and will cover:

1. Your attendance at the Conference (all days).
2. Ice Cream Social on Thursday evening at hotel.
3. Lunches on Thursday, Friday and Saturday.
4. Friday evening meal, and Banquet on Saturday evening.

Your Airport Connections

The Conference area is not close to any airports, but it is somewhat centrally located between 4 of them:

1. [Chicago—O'Hare International \(Illinois\)](#) is 1-1/2 hours northwest of the Conference area—we usually figure 2 hours [make it up to 2-1/2+ hours if your encounter rush hour traffic]
2. [Chicago—Midway International \(Illinois\)](#) is 1-1/4 hour northwest of the Conference area [add up to 3/4 hour if you encounter rush hour traffic]
3. [South Bend International \(Indiana\)](#) is 1-1/2 hours east of the Conference area—traffic is rarely a problem.
4. [Indianapolis International \(Indiana\)](#) is 2 hours south of the Conference area [add up to 1/2 hour if you encounter rush hour traffic]

Shuttle Bus Service:

If flying into [O'Hare](#) or [Midway](#), [Coach USA](#) is a very reliable shuttle bus service that picks up from both airports and delivers to the [Coach USA Highland, Indiana bus terminal](#)—about 30 min. away from the Conference area hotel. The buses leave the Chicago airports hourly; the schedules can be found at coachusa.com

Current Coach USA fares (either airport):

1-way trip: \$29
Round trip: \$52

You can purchase a ticket online, or when you get on the bus at the airport; the ticket is good for any time that day, so you won't waste your ticket if you cannot make the connection you were anticipating that day. On the website you will find your departure schedule from one of the airports; your end-destination will be the Highland terminal.

We will make drivers available to pick up people from the Highland shuttle bus terminal but only if we know ahead of time what shuttle bus you will be on. You should let us know at least a week ahead of time if you will be looking for a ride from us, and then call us by cell phone immediately when you get on the bus heading toward Highland, IN, so we can dispatch a driver to get you — use this phone number: [219-789-8617](tel:219-789-8617)

We can also make arrangements to get you back to the shuttle bus terminal in Highland, IN when you are leaving the Conference, **but only if we know ahead of time.**

Of course, other private shuttle services may be available; if you find one that meets your needs, contact us and we will see if we can be of any help for your arrangements at our end of your travels.

Contact the PET DeMotte people **for transportation assistance**, at [219-789-8617](tel:219-789-8617)

Your Side-Trip Options

Places of Interest

Fair Oaks Dairy and Pig Adventure <http://fofarms.com/> (located about 10 miles south on I-65)
Visit Fair Oaks Farms with educational and entertaining interactive exhibits. Learn and play in the activity centers. Absorb the farming lifestyle at modern working farms in the air-conditioned comfort of the farm buses and observation decks; watch cows milked on a 76-cow turntable. Sample the award-winning cheeses. Witness the miracle of life at their birthing facilities.

- a) The Dairy Adventure at Fair Oaks Farms is a fun-filled, up-close look at sustainable dairy farming. Special attractions at this country experience the whole family will enjoy include:
- Birthing Barn (live calf births)
 - Bus Adventure in the Barns
 - 4D Theater
 - 76 Contented Cows being Milked on the Milking Parlor Turntable
- b) The Pig Adventure at Fair Oaks Farms is a fun and fascinating journey into the world of modern pig farming. Everyone, young and old alike, will be delighted and entertained by interactive exhibits:
- Farrowing Barn (live births)
 - Gestation Barn
 - Interactive Electronic Sow Feeders
 - Ultrasound Experience
 - Hundreds (Thousands?) of Piglets Romping in the Nurseries

Hours & Admission

Adult	\$17 per adventure / \$27 for both
Kids (3-12)	\$12 per adventure / \$22 for both
Seniors (62+)	\$12 per adventure / \$22 for both

Hours (CST):

Mon.-Sat.	9AM—3PM
Bus Tours	9:30AM—2PM
Sun.	10AM—3PM
Bus Tours	10:30AM—2PM

The Shrine of Christ's Passion <http://shrineofchristspassion.org/stations-of-the-cross/>

Located at 10630 Wicker Avenue (U.S. 41) in St. John, Indiana (about 27 miles northwest from Conf. center). The Shrine of Christ's Passion is a multi-media interactive, half-mile winding Prayer Trail that depicts the last days of Jesus Christ's life. Forty life-size bronze sculptures in a tranquil setting, complete with beautiful music and amazingly sculptured gardens, allow visitors to experience the story of the crucifixion and resurrection as never before. Chicago TV broadcaster Bill Kurtis narrates the audio recordings that you hear at listening stations along the path. Donations are accepted.

Hours: Mon., Tues., Weds., Fri., Sat. & Sun. 10AM—5PM; Thurs. 10AM—8PM

Shady Springs Farm Antiques (located ½ block north of the DeMotte PET Shop)

Ken & Ruth DeVries have a delightful building on their farm where Ruth displays the many antiques she collected over the years. She opens her shop during the spring and fall for a week and also by appointment for special guests (like PET Conference Attendees!). She has even enjoyed hosting bridal showers there for some of her relatives. Give her a call to schedule a visit, and don't be surprised if she has a pot of tea waiting for you. (219) 869-1326 (c)

Your Participation

During this year's Annual Conference, PET International will be recognizing the fine work of volunteers like you but we need your help in identifying deserving recipients. We want to laud the efforts of those who fall into the following categories:

- ◆ Teamwork
- ◆ Quick Thinkers
- ◆ Entertainers

We also want to honor those who we lost over the course of the last year. Please review the criteria for the various categories and submit your entry as soon as possible (no later than September 5, 2016) to Arla Gabrielse via email at petdemotte@gmail.com If you need additional information, you may call Arla at (219) 789-4158.

Teamwork Award: Is there a particular couple or group of people in your Affiliate that really seem to click and work together as one? Do they represent the epitome of teamwork? If so, nominate them for recognition for the Teamwork Award. Please email a picture of this couple or group along with a sentence or paragraph describing their contribution.

Quick Thinkers Award: Every now and then we seem to find ourselves in a pinch. And then along comes the person or persons with the great idea to solve the dilemma. Which volunteers come to mind as the "Quick Thinkers" in your shop? Those are the people we want to recognize with this award. Please email a picture of these "Quick Thinkers" along with a sentence or paragraph describing their contribution.

Entertainers Award: Most every shop has at least one. This is the guy or gal that has a knack for brightening up our day with a quick joke or story. Or perhaps, it's the person that occasionally breaks out in song. They deserve our attention, so please nominate them for this category; please email a picture of these "Entertainers" along with a sentence or paragraph describing their entertainment.

Please feel free to nominate persons for any of the above categories. It's up to you and your team who you nominate.

Volunteers We Lost: PET International would like to honor those volunteers who passed away during the past year. We will be playing a slideshow during lunch on Saturday which will feature the pictures and names of those volunteers to whom we said goodbye. Please email a picture of these deceased volunteers (preferably of them working at the shop) along with a sentence or two describing their participation at your shop.

Thank you for your participation!



So that we may update our records, please provide the following contact information:

Affiliate Name: _____

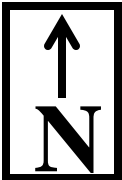
Position	Name	Address	Email	Phone
President				
Vice President				
Secretary				
Treasurer				
Trustee (or Director)				
Trustee				
Trustee				
Trustee				
Trustee				
Trustee				



Trustee				
Trustee				
Trustee				
Executive Director				
Accounting staff if not Treas.				

Mail completed form to Kathy Maynard, PET International, 503 E. Nifong Blvd. #186, Columbia, MO 65201-3517 or email to pet@petinternational.org.

Thank you!



Lowell
←more restaurants

I-65

Route 2
Exit 240

Comfort Inn
3550 E 181st Ave.
Hebron, IN 46341
219-690-1619

Hebron

Truck Stop

Truck Stop
Denny's
McDonalds
Arbys
Wendys

5.2 mi

Rt 231

PET Ministries, Inc.
12352 N 550 W
Wheatfield, IN 46392

DeMotte

**Community Church
—Conf. Location**
10498 N 450 E
De Motte, IN 46310

6.8 mi

Rt 231

CR 550 W

Wheatfield

Roselawn

Rt 55

John
Deere
Dealer

Rt 10

Rt 231

3.1 mi

W

Rt 10

C.R. 1000 N.

CR 450 E

.5 mi

Route 10
Exit 230

3.5 mi

Rt 10

2.5 mi

Rt 110

2.5 mi

E

C.R. 900 N. Oak Lake

2 mi

10 mi




Rt 231

*Fair Oaks
Dairy and Pig
Adventure*

Route 14
Exit 220

S

Your Local Map

-  Campground
-  Flashing (or Stop) Lights
-  Conference Destinations